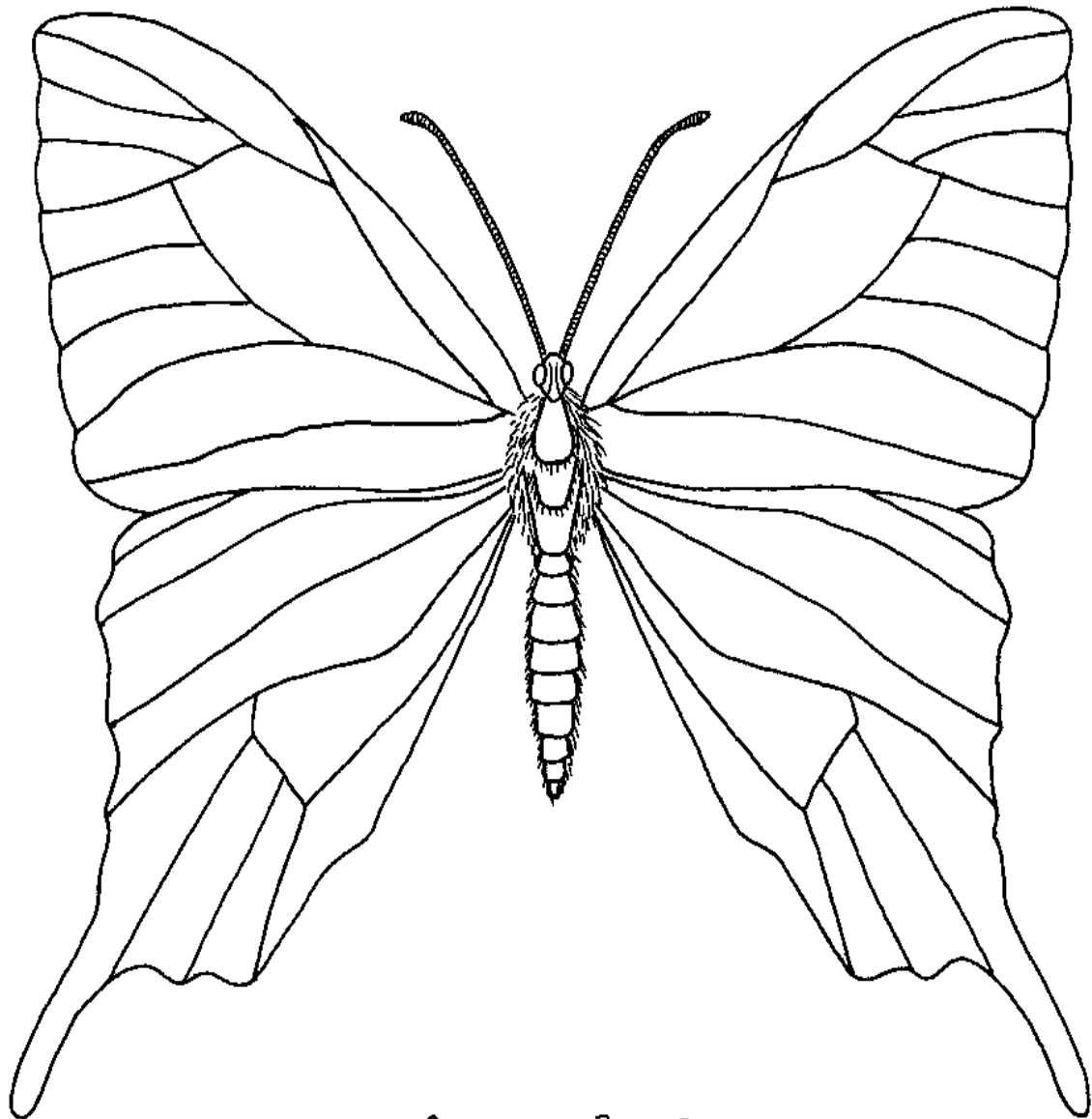


FRIENDS OF THE
PHASMID Inc.



SWALLOWTAIL BUTTERFLY

NameFriends © 2017

How many legs do butterflies have?

6 or 8

PO BOX 138 Macarthur Square NSW 2560

Email: sfellenb@bigpond.net.au

Web site: www.friendsofthephasmid.org.au